



Attention:

- Prevent danger resulting from damaged voltage supply cables. If damaged, the voltage supply cable must be replaced by the manufacturer or his customer service department.
- Only install indoors, in a dry place, avoid direct contact with water and sunshine.
- Use only INAX's genuine replacement parts and accessories.
- The use of other parts will result in the voiding of the warranty and could lead to injuries.

Technical data:

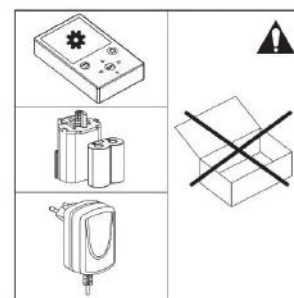
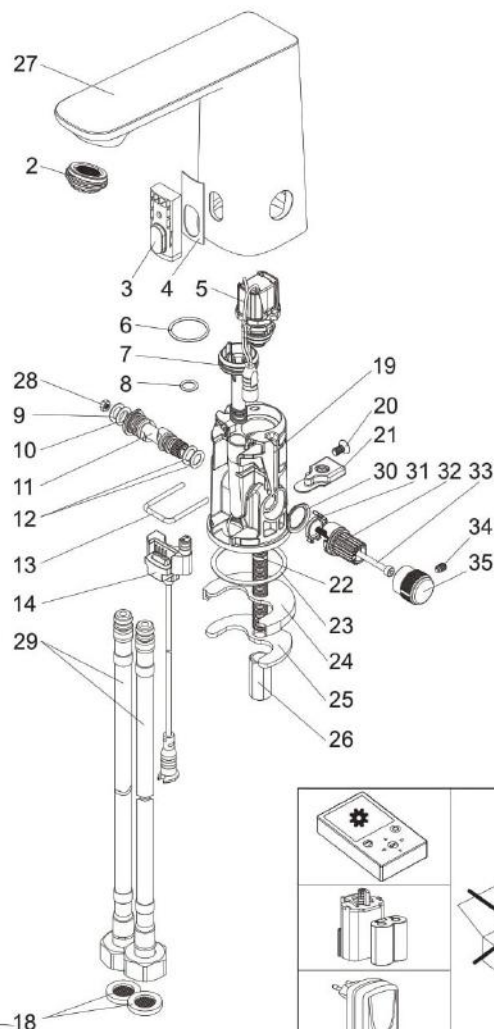
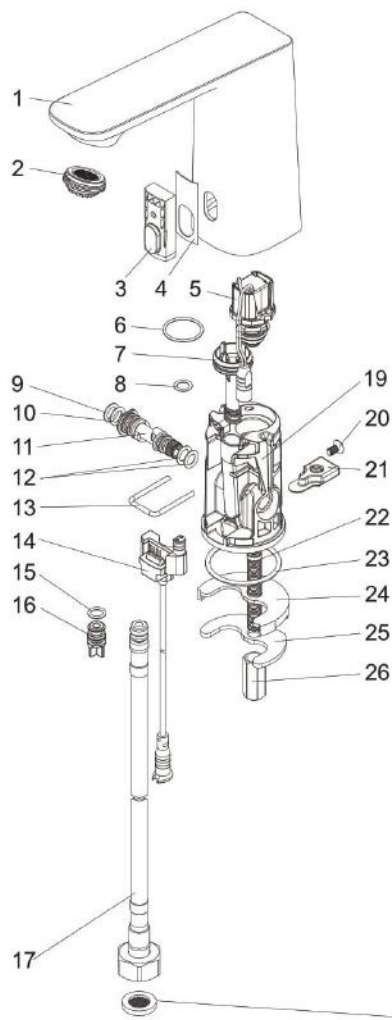
- Switched-mode power supply:
 - In-put : 100-240 VAC, 50-60 Hz
 - Out-put : 6.75 VDC, 2.4W
 - Protection class : IP40
- Lithium battery:
 - Voltage : 6 VDC
 - Type : CR-P2
 - Protection class : IP59K
- IR sensor (default):
 - Reception range : 12cm
 - Run-on time : 1 second
 - Automatic safety shut-off : 60 seconds

Fault	Cause	Remedy
Water not flowing.	<ul style="list-style-type: none"> • Filter blocked. • Solenoid valve defective. • Plug-in connector without contact. • No voltage. <ul style="list-style-type: none"> - Battery discharged. (indicator lamp lights up continuously). - Power supply unit defective. 	<ul style="list-style-type: none"> • Clean filter. • Replace solenoid valve. • Check plug-in connector electronics and solenoid valve. <ul style="list-style-type: none"> - Replace battery. - Replace power supply unit.
Undesired water flow.	<ul style="list-style-type: none"> • Sensor system detection zone set too high for local conditions. • Automatic flushing activated. • Solenoid valve defective. 	<ul style="list-style-type: none"> • Reduce range using remote control (special accessory). • Wait 1 - 10 minutes. • Replace solenoid valve.
Flow rate too low.	<ul style="list-style-type: none"> • Aerator dirty. • Filter dirty. • Non-return valve defective. 	<ul style="list-style-type: none"> • Clean or replace aerator. • Clean filter. • Replace the non-return valve.
The outlet water temperature is not as hot/cold as expected.	There is a big deviation between hot and cold inlet water pressure.	Balance pressure of inlet hot and cold water, should not deviate more than 0.5 bar.



AMV-91

AMV-91K



No.	Name	SAP code	AMV-91	AMV-91K
1	Mono body	F00B2626-40	01	—
2	Aerator	M148F8	01	01
3	IR-sensor	M1400D	01	01
4	Self adhesive	M1400E	01	01
5	Solenoid Valve	M148F3	01	01
6	O-ring	M1452K	01	01
7	Tube	M14461	01	01
8	O-ring	M1452L	01	01
9	O-ring	M1452O	01	01
10	O-ring	M1452N	01	01
11	Shaft	M14165	01	01
12	O-ring	M1452M	02	02
13	Clip	M1452R	01	01
14	Plug unit	M148F4	01	01
15	O-ring	M1452J	01	—
16	Drain plug	M1400F	01	—
17	Flexible hose	M148A8	01	—
18	Filter Packing	M14578	01	02

19	Plastic body	M1491B	01	01
20	Bolt	M14462	01	01
21	Holder	M1452Q	01	01
22	Fix bolt	M14378	01	01
23	O-ring	M1452P	01	01
24	Washer	M14575	01	01
25	Packing	M14515	01	01
26	Fix nut	F0371462-21	01	01
27	Mixer body	F00B2625-40	—	01
28	Nut	M14382	—	01
29	Flexible hose	M148G1	—	02
30	Sleeve	M1452S	—	01
31	Adjustment ring	M14727	—	01
32	Adapter	M1400H	—	01
33	Bolt	M14383	—	01
34	Bolt	M14384	—	01
35	Knob	F0611450-40	---	01



Since 1949

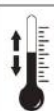
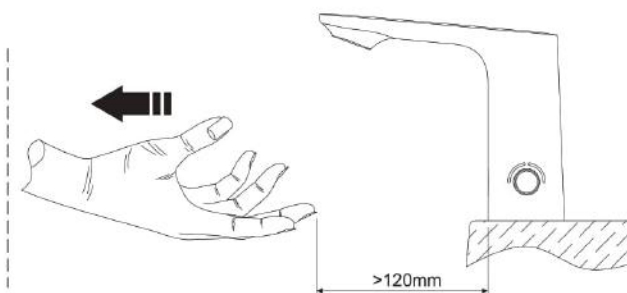
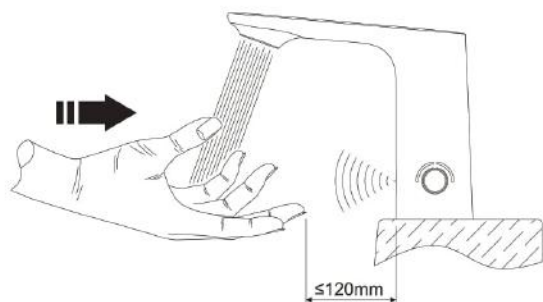
Acme Sanitary Ware Co. Ltd.

1/F, Acme Building, 22-28 Nanking Street, Kowloon, Hong Kong

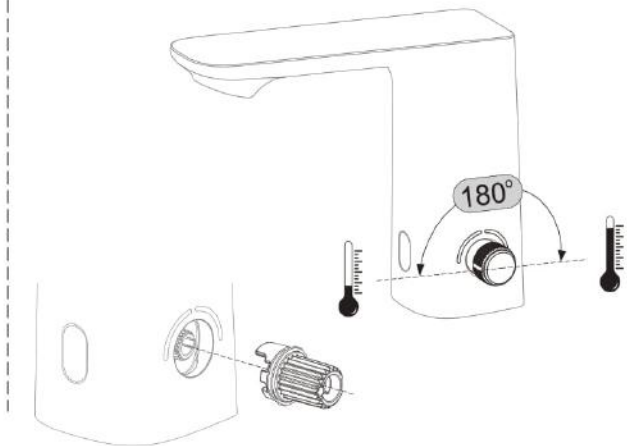
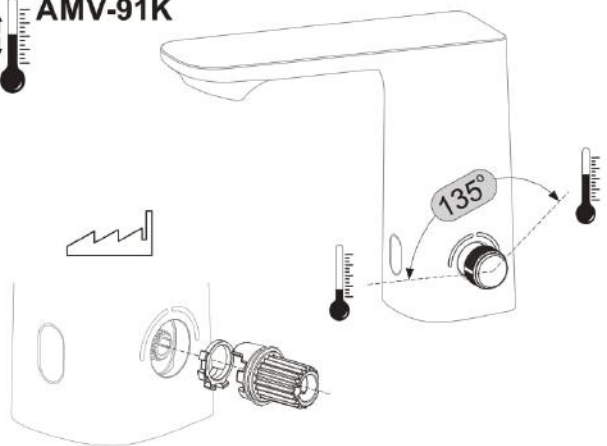
Tel: 2388 7171 Fax: 2710 8012

Email: acme@acmesanitary.com.hk

Website: www.acmesanitary.com.hk



AMV-91K





水務署
Water Supplies Department

總部 Headquarters

香港灣仔告士打道七號入境事務大樓 48 樓

Immigration Tower, 7 Gloucester Road, Wan Chai, Hong Kong

本署
Our
來函檔
Your ref.



321/2023 T/J(4/2023)

電話

Tel.

傳真

Fax.

:

:

2824 0578

1 February 2023



**Approval of "INAX" Sensor Mixer
(General Acceptance No. C20230040)**

Your letter ref. WRC/2815 dated 3 January 2023 refers.

Having considered the test report ref. 221005PC220138A issued on 6 December 2022 by Fugro Technical Services Limited, this Authority accepts that the fitting described below complies with, and its use when correctly installed does not contravene, the Waterworks Ordinance and Regulations.

Name of Manufacturer: Branch of Lixil Vietnam Corporation in Quang Nam

Country of Origin: Vietnam

Brand: INAX

Details of Fitting: 1/2" Deck mounted sensor basin mixer

Model: AMV-91K

Body Markings: **INAX**

Expiry Date: 13 July 2027



This Authority hereby permits the use of the above fitting in fresh water plumbing systems subject to full adherence to Waterworks installation requirements. In particular, you are required to draw your customers' attention to the following requirement-

"The cold water supply to the fitting shall be drawn from the same source that supplies the hot water apparatus so as to provide a balanced pressure and to obviate the risk of scalding in the event of a restriction or failure in the water supply."

"A stop cock or gate valve must be installed at the upstream of the fitting for manual isolation of water supply." AND

"The main voltage operated sensor valve should comply with the electricity safety regulation for applications in bathroom, toilet etc."

A condition of this acceptance is that the fitting to be installed shall be replicas of the sample as certified by the testing agent mentioned above and without modifications. This acceptance may be withdrawn at any time if the standard of the fitting installed fails to meet that of the approved sample or if the fitting is found to be unsuitable for use in fresh water plumbing systems.

This acceptance is only applicable to the main body of the fitting, unless otherwise specified.

For the use of the fitting in any project, the General Acceptance Number of this letter must be quoted as a means of identification of acceptance of the fitting by this Authority.

Should you have any enquiries, please contact our Engineer Ms Winnie LO at tel. no. 3583 4086.

Yours faithfully,



(YAU Hau Yin)
for Director of Water Supplies

Encl.

c.c. WSD 3321/1/82] - without catalogue
 ME/MC] - with soft copy only